



# RISE ICREATE 2026

# 3<sup>rd</sup>

## INTERNATIONAL CONFERENCE ON RESEARCH AND EXHIBITS ON AVIATION AND AERONAUTICS, TOURISM, ENGINEERING AND EDUCATION

### THEME

Advancing Research through AI Integration



### RESEARCH PROGRAM AREAS (AI-INTEGRATED)



Aviation and  
Aeronautics



Tourism and  
Hospitality  
Management



Engineering  
and  
Technology



Business,  
Finance, and  
Management



Educational  
Technology



Criminal Justice  
Education &  
Technology



Health  
Education and  
Technology

ORGANIZED BY:



CO-HOSTED BY:





4TH Research Innovation for Sustainable Education 2026: International  
Conference on Research & Exhibits on Aviation, Aeronautics, Tourism,  
Engineering & Education

**RISE ICREATE 2026**

*Advancing Research through Artificial Intelligence Integration  
For Sustainable Futures*



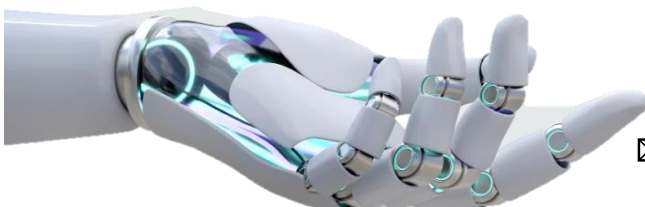
ISSN-L 3116-2215



# RISE ICREATE 2026

4TH Research Innovation for Sustainable  
Education 2026: 3rd International Conference on  
Research & Exhibits on Aviation, Aeronautics,  
Tourism, Engineering & Education

**Theme:** *Advancing Research through Artificial  
Intelligence Integration for Sustainable Futures*



**RISE ICREATE 2026**

May 25 to 27, 2026

WCC ATC Cabin Hall, Brgy. Canarvacanan, Binalonan,  
Pangasinan, 2436, Philippines



riseicreateph@gmail.com



+639171434359



RISE: icreate



4TH Research Innovation for Sustainable Education 2026: International  
Conference on Research & Exhibits on Aviation, Aeronautics, Tourism,  
Engineering & Education

## RISE ICREATE 2026

*Advancing Research through Artificial Intelligence Integration  
For Sustainable Futures*



ISSN-L 3116-2215



### RISE-ICREATE 2026:

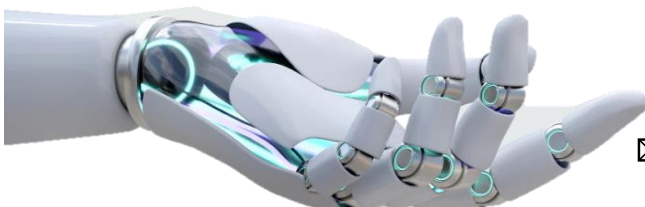
#### THEME: ADVANCING RESEARCH THROUGH AI INTEGRATION FOR SUSTAINABLE FUTURES

RISE-ICREATE 2026: Advancing Research Through AI Integration for Sustainable Futures highlights the expanding role of Artificial Intelligence in strengthening research, innovation, sustainability, and academic practice across multidisciplinary fields. The conference, scheduled on May 25–27, 2026, serves as an international academic platform featuring plenary discussions from international and national experts, AI-integrated research presentations, student innovation and project exhibits, institutional AI readiness engagements, and collaborative scholarly activities among researchers, educators, students, industry practitioners, policymakers, and academic leaders.

The 2026 conference emphasizes the responsible, ethical, and sustainable integration of AI in research and innovation, particularly in areas involving data analytics, predictive modeling, intelligent systems, automation, simulation, decision support, and technology-driven solutions addressing educational, industrial, and societal needs. Student project exhibits and technology presentations will showcase AI-enabled innovations and research-informed applications that demonstrate practical and sustainable solutions across various disciplines.

A major component of the conference is the AI Institutional Readiness Forum, which provides higher education institutions and educational leaders an avenue to present institutional AI initiatives, readiness frameworks, strategic innovation agendas, and collaborative research directions related to AI integration in education and research. The conference also incorporates research networking activities, project assessment and judging, and sustainability-centered initiatives such as the Adopt-a-Plant Program involving partner institutions, delegates, and collaborating organizations.

RISE-ICREATE 2026 aims to provide a dynamic scholarly venue where researchers, educators, graduate students, undergraduate students, innovators, and industry professionals may engage in meaningful academic discourse, present AI-integrated and sustainability-driven research outputs, exchange best practices, and establish interdisciplinary and international collaborations. While aviation and aeronautics, engineering technology, education technology, and health technology remain among the conference's major categories, participation is open to all fields, provided that Artificial Intelligence is meaningfully integrated into the research, innovation, or project output in alignment with sustainable and future-oriented development.



## RISE ICREATE 2026

May 25 to 27, 2026

WCC ATC Cabin Hall, Brgy. Canarvacanan, Binalonan,  
Pangasinan, 2436, Philippines



riseicreateph@gmail.com



+639171434359



RISE: icreate



4TH Research Innovation for Sustainable Education 2026: International  
Conference on Research & Exhibits on Aviation, Aeronautics, Tourism,  
Engineering & Education

## RISE ICREATE 2026

*Advancing Research through Artificial Intelligence Integration  
For Sustainable Futures*



ISSN-L 3116-2215

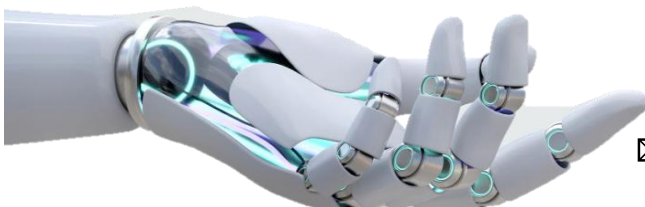


The conference will feature the following major activities:

- **Keynote Addresses** by distinguished scholars and industry experts focusing on Artificial Intelligence in research, innovation, and higher education
- **Plenary Sessions** highlighting AI-enabled research methods, emerging trends, and ethical considerations in AI integration
- **Panel Discussions** on challenges, opportunities, and policy directions related to Artificial Intelligence in research and institutional practice
- **Research Paper Presentations** showcasing empirical, applied, and interdisciplinary studies with AI integration
- **Student Project and Research Exhibits** presenting AI-enabled systems, prototypes, and innovation-driven outputs
- **AI Institutional Readiness Forum and Round Table Discussions** serving as an avenue for institutions to present AI readiness profiles, articulate AI priority research agendas, propose collaborative concepts, express institutional commitments, build a shared research ecosystem, and discuss future conference venues and joint programs

The conference will highlight the latest developments across aviation, aeronautics, engineering, technology, education, business, and allied disciplines by emphasizing how Artificial Intelligence integration advances research, innovation, sustainability, and professional practice. It will address current challenges and emerging opportunities related to digital transformation, intelligent systems, automation, predictive analytics, and AI-enabled research methodologies that support institutional growth, operational efficiency, and sustainable development. Furthermore, the conference recognizes the significant role of business, finance, management, hospitality, tourism, and education in shaping both global and local economies through data-driven strategies, AI-supported decision-making, and technology-enhanced solutions that improve productivity, preserve cultural identity and heritage, and promote inclusive community advancement.

Beyond aviation and aeronautics, RISE-ICREATE 2026 expands its scope to include engineering technology, food technology, civil, mechanical, electrical, electronics, information technology, and computer engineering, as well as educational technology, social sciences, arts and humanities, criminal justice education, health education, and health technology, provided that Artificial Intelligence is meaningfully integrated into the research framework, methodology, project development, innovation process, or expected outcomes. This multidisciplinary and inclusive approach supports research and innovation initiatives that strengthen institutional capability, encourage interdisciplinary collaboration, advance sustainable and ethical AI practices, and generate practical solutions that benefit industries, institutions, and communities.



## RISE ICREATE 2026

May 25 to 27, 2026

WCC ATC Cabin Hall, Brgy. Canarvacanan, Binalonan,  
Pangasinan, 2436, Philippines



riseicreateph@gmail.com



+639171434359



RISE: icreate



4TH Research Innovation for Sustainable Education 2026: International  
Conference on Research & Exhibits on Aviation, Aeronautics, Tourism,  
Engineering & Education

## RISE ICREATE 2026

*Advancing Research through Artificial Intelligence Integration  
For Sustainable Futures*



ISSN-L 3116-2215

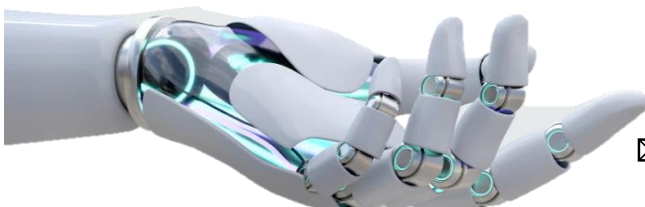


Organized by the WCC Aeronautical and Technological College, Inc., Binalonan Campus, in collaboration with partner Higher Education Institutions (HEIs), the conference provides a platform for academic and professional exchange. It offers participants opportunities to engage in collaborative AI-integrated research, institutional dialogue, and scholarly networking. Aligned with the United Nations Sustainable Development Goals (SDGs) and the Harmonized National Research Agenda, RISE ICREATE 2026 promotes innovation, collaboration, and sustainable research practices across disciplines. Through student project exhibits, research presentations, and the AI Institutional Readiness Forum, the conference seeks to advance future-ready research ecosystems and generate meaningful academic and societal impact.

### Objectives

RISE ICREATE 2026 aims to achieve the following objectives:

1. To provide a scholarly platform for the presentation of AI-integrated research papers, applied studies, and student project exhibits across disciplines.
2. To promote the responsible and ethical integration of Artificial Intelligence in research design, methodology, project development, and scholarly outputs.
3. To showcase AI-enabled student projects and research exhibits that demonstrate practical, innovative, and research-informed applications of AI.
4. To facilitate an AI Institutional Readiness Forum that enables higher education institutions to:
  - present institutional AI readiness profiles,
  - discuss about AI research and innovation priority agendas,
  - propose collaborative research and development concepts,
  - express institutional commitments, and
  - contribute to the development of a sustainable AI research ecosystem.
5. To foster collaboration and knowledge exchange among researchers, educators, students, industry practitioners, and academic leaders through keynote lectures, plenary sessions, panel discussions, and round table dialogues.
6. To encourage interdisciplinary and multidisciplinary engagement across aviation, aeronautics, tourism, engineering, education, business, health, criminal justice, and other fields, provided that Artificial Intelligence is meaningfully integrated into the research or project output.
7. To support the advancement of future-ready research ecosystems that align with sustainable development goals, institutional research agendas, and emerging global research priorities.



## RISE ICREATE 2026

May 25 to 27, 2026

WCC ATC Cabin Hall, Brgy. Canarvacanan, Binalonan,  
Pangasinan, 2436, Philippines



riseicreateph@gmail.com



+639171434359



RISE: icreate



4TH Research Innovation for Sustainable Education 2026: International Conference on Research & Exhibits on Aviation, Aeronautics, Tourism, Engineering & Education

## RISE ICREATE 2026

*Advancing Research through Artificial Intelligence Integration  
For Sustainable Futures*



ISSN-L 3116-2215



### SIGNIFICANT RESEARCH PROGRAM AREAS

The conference covers the following seven (7) major research program areas, with Artificial Intelligence integration as a core requirement:

1. Aviation and Aeronautics
2. Tourism and Hospitality Management
3. Engineering and Technology
4. Educational Technology, Social Sciences, Arts, and Humanities
5. Business, Finance, and Management
6. Criminal Justice Education & Technology
7. Health Education & Technology

### SUB-TOPICS

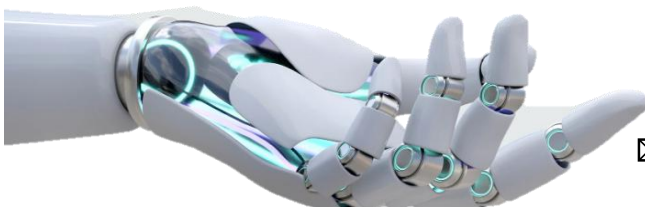
The sub-topics represent diverse fields including aviation and aeronautics, engineering technology, education technology, health technology, business, tourism, social sciences, and other multidisciplinary areas that emphasize research innovation, sustainability, and meaningful Artificial Intelligence integration. National research priorities, institutional innovation agendas, industry needs, and globally recognized frameworks, including but not limited to the Sustainable Development Goals, serve as guiding references in promoting interdisciplinary collaboration, ethical AI utilization, sustainable development, and future-oriented research and innovation outcomes.

#### 1. Aviation and Aeronautics

- AI-enabled research for aviation safety, efficiency, and sustainability
- Intelligent training systems and simulators for aviation education and workforce development
- Predictive maintenance, diagnostics, and reliability research using AI
- AI applications in airport systems, air traffic management, and aviation logistics
- Research innovations supporting sustainable, inclusive, and resilient aviation systems

#### 2. Tourism and Hospitality Management

- AI-driven research on aviation tourism planning, airline-supported destination management, and passenger experience optimization
- Intelligent systems for in-flight and ground-based hospitality operations, service quality enhancement, and cabin crew workforce development
- Data-driven analysis of air passenger behavior, travel preferences, service satisfaction, and cultural sensitivity in aviation tourism.



## RISE ICREATE 2026

May 25 to 27, 2026

WCC ATC Cabin Hall, Brgy. Canarvacanan, Binalonan, Pangasinan, 2436, Philippines



riseicreateph@gmail.com



+639171434359



RISE: icreate



4TH Research Innovation for Sustainable Education 2026: International  
Conference on Research & Exhibits on Aviation, Aeronautics, Tourism,  
Engineering & Education

## RISE ICREATE 2026

*Advancing Research through Artificial Intelligence Integration  
For Sustainable Futures*



ISSN-L 3116-2215



- AI-supported tourism and cabin service education, including training models for flight attendants and aviation hospitality programs
- Ethical and inclusive AI applications in aviation tourism, food service feasibility studies, and cultural heritage representation in airline and airport services

### 3. Engineering and Technology

- AI-integrated engineering research in design, modeling, and simulation
- Intelligent systems, automation, and robotics for sustainable industrial applications
- Smart infrastructure and AI-supported solutions for climate resilience
- Engineering education innovations aligned with emerging technologies
- Research addressing national innovation priorities and technology transfer
- AI applications in aircraft systems engineering, maintenance, and performance optimization
- Engineering research on intelligent aviation infrastructure, including airports, hangars, and support systems

### 4. Business, Finance, and Management

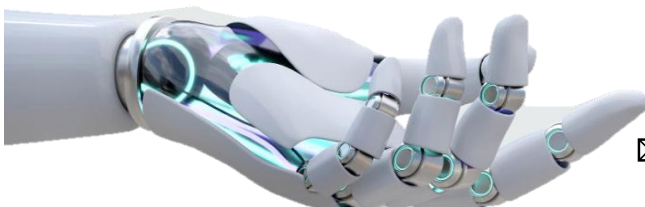
- AI-supported research in business analytics, decision-making, and organizational performance
- Intelligent financial systems, risk analysis, and digital finance research
- Innovation-driven entrepreneurship and technology-based enterprise studies
- AI integration in management education and leadership development
- Governance, ethics, and responsible AI use in business and finance
- AI-enabled airline operations management, cost optimization, and performance analysis
- Feasibility studies of aviation-related enterprises, including in-flight services, airport retail, and food service operations using AI analytics

### 5. Educational Technology, Social Sciences, Arts, and Humanities

- AI-enhanced teaching, learning analytics, and assessment research
- Adaptive learning systems and inclusive education technologies
- AI-supported research methods in education and social sciences
- Digital humanities, creativity, and cultural research using AI
- Ethical, inclusive, and human-centered AI in education
- AI-supported training models for aviation, cabin service, and tourism-related education
- Research on cultural sensitivity, communication, and service excellence in aviation and tourism using AI tools

### 6. Health Education and Technology

- AI-integrated research in health education, training, and simulation
- Intelligent systems for public health research and health literacy
- AI-supported decision tools for healthcare education and workforce development



## RISE ICREATE 2026

May 25 to 27, 2026

WCC ATC Cabin Hall, Brgy. Canarvacanan, Binalonan,  
Pangasinan, 2436, Philippines



riseicreateph@gmail.com



+639171434359



RISE: icreate



4TH Research Innovation for Sustainable Education 2026: International  
Conference on Research & Exhibits on Aviation, Aeronautics, Tourism,  
Engineering & Education

## RISE ICREATE 2026

*Advancing Research through Artificial Intelligence Integration  
For Sustainable Futures*



ISSN-L 3116-2215



- Digital and AI-enabled health education for underserved communities
- Ethical, inclusive, and sustainable AI use in health education and research
- AI-supported health, safety, and fatigue management research for aviation and cabin crew education
- Research on in-flight health services, emergency response training, and passenger well-being using AI-enabled simulation tools.

### 7. Criminal Justice Education and Technology

- AI-supported research in criminal justice education and training systems
- Intelligent data analysis for crime studies, prevention, and policy research
- AI applications in forensic education and investigative research
- Technology-enabled justice education, transparency, and governance
- Ethical and rights-based use of AI in justice-related research
- AI applications in aviation security, passenger screening, and airport safety education
- Research on risk management, safety compliance, and incident analysis in aviation-related environments using AI

#### **SEE TEMPLATES:**

<https://drive.google.com/drive/folders/1Tm8uQRKbXceVYqi3NAVFS6zP2GxGvi3F?usp=sharing>

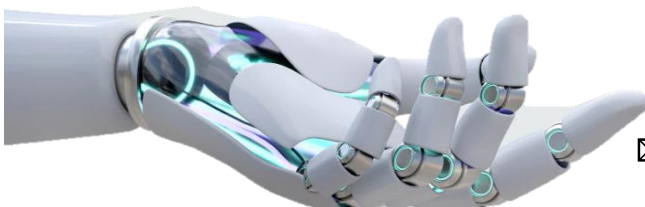


The AI Institutional Readiness Forum is a dedicated parallel session of RISE ICREATE 2026 conducted in a separate room, designed exclusively for higher education leaders, research directors, administrators, and institutional representatives. The forum serves as a strategic space for institutions to assess their readiness for Artificial Intelligence integration, align research and innovation priorities, and establish collaborative commitments toward building a shared AI research ecosystem.

#### **FORUM ACTIVITIES**

##### 1. **Keynote Briefings on AI in Research and Higher Education**

Short expert presentations highlighting current AI trends, ethical standards, governance considerations, and research applications relevant to higher education institutions.



## RISE ICREATE 2026

May 25 to 27, 2026

WCC ATC Cabin Hall, Brgy. Canarvacanan, Binalonan,  
Pangasinan, 2436, Philippines



riseicreateph@gmail.com



+639171434359



RISE: icreate



4TH Research Innovation for Sustainable Education 2026: International  
Conference on Research & Exhibits on Aviation, Aeronautics, Tourism,  
Engineering & Education

## RISE ICREATE 2026

*Advancing Research through Artificial Intelligence Integration  
For Sustainable Futures*



ISSN-L 3116-2215



### 2. Institutional AI Readiness Profiling

Participating institutions will present their current AI readiness status, including research capability, infrastructure, policies, faculty competence, and existing AI-related initiatives.

### 3. AI Priority Agenda and Collaborative Concept Development

Facilitated discussions will allow institutions to identify AI research and innovation priority areas and develop collaborative concepts such as joint research projects, academic programs, capacity-building initiatives, and shared resources.

### 4. Commitment Statements and Forward Planning

The forum will conclude with institutional commitment statements on responsible AI integration and collective planning for future collaborations, including succeeding programs, joint initiatives, and potential host institutions for future AI-focused forums.

### 5. AI Research Ecosystem Building

Consolidation of proposed collaborations into a shared AI research ecosystem, including partnership mapping, resource sharing, and coordination mechanisms.

### 6. Forward Planning and Program Continuity

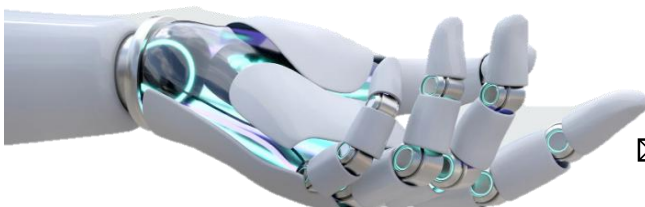
Discussion and agreement on future conference hosting, succeeding AI-focused forums, joint programs, and follow-through activities beyond RISE ICREATE 2026.

**SEE REGISTRATION:** <https://forms.gle/GbzrCJb2iMcjzPNQA>



WCC-ATC RISE ICREATE 2026 serves as a venue for scholarly exchange of research issues, emerging concerns, and innovative outputs within a collegial and academically rigorous environment. Across three (3) days, the conference promotes AI-driven research innovation aligned with sustainability and multidisciplinary advancement.

- **KEYNOTE PRESENTATIONS.** Distinguished experts will deliver keynote addresses focusing on AI integration in regional, national, and international research systems. Topics will emphasize AI-enabled sustainability, digital transformation, intelligent systems, and future-ready research ecosystems.



## RISE ICREATE 2026

May 25 to 27, 2026

WCC ATC Cabin Hall, Brgy. Canarvacanan, Binalonan,  
Pangasinan, 2436, Philippines



[riseicreateph@gmail.com](mailto:riseicreateph@gmail.com)



+639171434359



RISE: icreate



4TH Research Innovation for Sustainable Education 2026: International  
Conference on Research & Exhibits on Aviation, Aeronautics, Tourism,  
Engineering & Education

## RISE ICREATE 2026

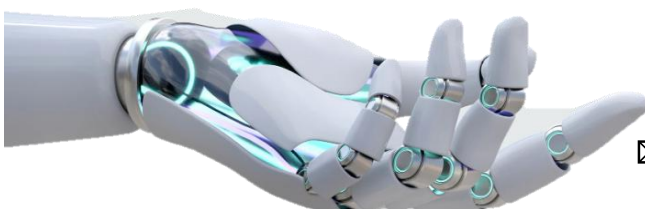
*Advancing Research through Artificial Intelligence Integration  
For Sustainable Futures*



ISSN-L 3116-2215



- **PLENARY SESSIONS.** Invited scholars and experts will conduct multidisciplinary panel discussions centered on AI adoption, institutional readiness, ethical considerations, governance frameworks, and sector-specific AI applications.
- **PAPER PRESENTATIONS.** Students, faculty members, non-teaching personnel, and professionals will present original completed or ongoing research studies. Peer review and scholarly feedback will emphasize methodological rigor and responsible AI utilization. All submissions must demonstrate AI integration through:
  - AI-assisted data analytics
  - Predictive modeling or intelligent systems
  - Automation frameworks
  - AI-enhanced research methodologies
  - Technology-enabled sustainability solutions
- **EXHIBITS AND POSTER PRESENTATIONS.** Innovative projects, prototypes, AI-enabled systems, and sustainability-driven research outputs will be showcased. Demonstrations must reflect practical AI application or digital innovation within the seven research program areas.
- **RESEARCH AWARDS.** Awards will recognize excellence in AI-integrated research and presentation:
  - a. Best Research Project
  - b. Best Research Paper
  - c. Best Presenter
  - d. Best AI-Driven Project Exhibit (Food and Non-Food)
  - e. Most Promising Young Researcher on SDG & AI-driven Projects



## RISE ICREATE 2026

May 25 to 27, 2026

WCC ATC Cabin Hall, Brgy. Canarvacanan, Binalonan,  
Pangasinan, 2436, Philippines



riseicreateph@gmail.com



+639171434359



RISE: icreate



4TH Research Innovation for Sustainable Education 2026: International  
Conference on Research & Exhibits on Aviation, Aeronautics, Tourism,  
Engineering & Education

## RISE ICREATE 2026

*Advancing Research through Artificial Intelligence Integration  
For Sustainable Futures*



ISSN-L 3116-2215



### AI INSTITUTIONAL READINESS FORUM

The AI Institutional Readiness Forum is a dedicated parallel session of RISE ICREATE 2026 conducted in a separate venue and designed exclusively for higher education leaders, research directors, administrators, and institutional representatives. The Forum serves as a strategic platform for institutions to:

- Assess their readiness for Artificial Intelligence integration in research and innovation systems;
- Align institutional research priorities with AI-driven transformation; and
- Establish structured collaborative commitments toward building a shared and sustainable AI research ecosystem.

Participation in the Forum is intended for policy-level and decision-making representatives to ensure substantive institutional dialogue and forward planning.

### Expected Outputs

- Institutional AI Readiness Mapping
- Priority AI Research and Innovation Agenda
- Preliminary AI Research Ecosystem Framework
- Institutional Commitment Statements

Participation is exclusive to Research Directors, Academic Leaders, and Institutional Representatives authorized to engage in policy-level discussions.

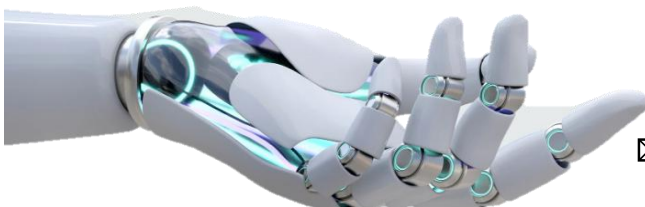
### FORUM ACTIVITIES

#### 1. Keynote Briefings on AI in Research and Higher Education

Short expert briefings will present current developments in Artificial Intelligence as applied to higher education research systems. Discussions will include:

- Emerging AI research trends;
- Ethical and regulatory considerations;
- Governance and institutional policy frameworks;
- AI-enabled research methodologies and innovation models.

These briefings will provide a common reference point for institutional discussions.



## RISE ICREATE 2026

May 25 to 27, 2026

WCC ATC Cabin Hall, Brgy. Canarvacanan, Binalonan,  
Pangasinan, 2436, Philippines



riseicreateph@gmail.com



+639171434359



RISE: icreate



## 2. Institutional AI Readiness Profiling

Participating institutions will present a structured overview of their current AI readiness status, including:

- Research capability and AI integration practices;
- Digital infrastructure and technological resources;
- Existing AI governance policies and compliance mechanisms;
- Faculty competence and professional development initiatives;
- Ongoing or planned AI-related research programs and partnerships.

The objective is to establish a comparative institutional mapping of AI preparedness.

## 3. AI Priority Agenda and Collaborative Concept Development

Through facilitated dialogue sessions, institutional representatives will:

- Identify priority AI research and innovation areas;
- Determine shared challenges requiring collective action;
- Develop preliminary collaborative concepts such as:
  - Joint research projects;
  - Inter-institutional academic programs;
  - Capacity-building initiatives;
  - Shared research infrastructure and resource pooling mechanisms.

This segment is designed to move from assessment toward actionable collaboration.

## 4. Commitment Statements and Strategic Forward Planning

The Forum will culminate in formal institutional commitment statements affirming:

- Responsible and ethical AI integration;
- Continued participation in inter-institutional collaboration;
- Strategic alignment with sustainability and research innovation goals.

Participants will also discuss succeeding programs, potential joint initiatives, and possible host institutions for future AI-focused forums.

## 5. AI Research Ecosystem Building

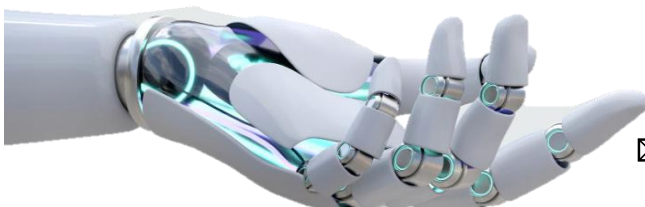
Proposed collaborative initiatives will be consolidated into a preliminary AI Research Ecosystem Framework, which may include:

- Partnership mapping among participating institutions;
- Resource and expertise sharing mechanisms;
- Coordinated research clusters;
- Communication and governance structures for sustained collaboration.

## 6. Program Continuity and Institutional Roadmap

The Forum will conclude with agreement on:

- Successive AI-focused consortium meetings;



**RISE ICREATE 2026**

May 25 to 27, 2026

WCC ATC Cabin Hall, Brgy. Canarvacanan, Binalonan,  
Pangasinan, 2436, Philippines



riseicreateph@gmail.com



+639171434359



RISE: icreate



4TH Research Innovation for Sustainable Education 2026: International  
Conference on Research & Exhibits on Aviation, Aeronautics, Tourism,  
Engineering & Education

## RISE ICREATE 2026

*Advancing Research through Artificial Intelligence Integration  
For Sustainable Futures*



ISSN-L 3116-2215



- Follow-through activities beyond RISE ICREATE 2026;
- Monitoring mechanisms for collaborative outputs;
- Long-term institutional roadmap for AI research development.

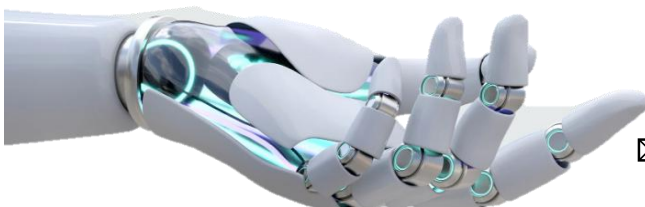
For registration see template: <https://forms.gle/GbzcJb2iMczPNQA>

For Institutional AI Readiness Profiling Template:

### PROJECT EXHIBIT GUIDELINES

This project exhibits aims to bring together the most-tech savvy and innovative products/projects align with the Harmonized National Research Agenda and Sustainable Development Goals, and AI Integration as well as enhance partnership with different colleges and universities in line with research and technology. This exhibit seeks to encourage these students, faculty and professionals to think and propose out-of-the-box solutions and provide students the much-needed space to present their projects and ideas especially to disseminate knowledge and share innovations that could form part of the country's pool of practices in the hope of gaining a sustainable cities and communities.

- Exhibitors
  - The exhibitors shall be categorized as:
    - Food Category
      - Tourism & Hospitality Mgt. Students from participating institutions
      - Business, Finance & Mgt Students from participating institutions
    - Non-Food Category
      - Aviation & Aeronautics Students from participating institutions
      - Engineering, Education and IT Students from partner institutions
      - Educational Technology, Social Studies, Arts & Humanities from partner institutions
      - Criminal Justice Education Technology from partner institutions
      - Health Technology from partner institutions
      - Tourism & Hospitality Mgt. Students from participating institutions
      - Business, Finance & Mgt Students from participating institutions
  - Duration of Submission – Organizers will start accepting entries via online submissions from **March 09, 2026 to April 24, 2026**
- Exhibit Requirements
  - School entries must have been researched and developed (food and non-food products) prior to the event proper.
  - They must submit their latest or existing school projects using any developed food and non-food products, robotics, machineries, parts, and platforms.



## RISE ICREATE 2026

May 25 to 27, 2026

WCC ATC Cabin Hall, Brgy. Canarvacanan, Binalonan,  
Pangasinan, 2436, Philippines



[riseicreateph@gmail.com](mailto:riseicreateph@gmail.com)



+639171434359



RISE: icreate



4TH Research Innovation for Sustainable Education 2026: International  
Conference on Research & Exhibits on Aviation, Aeronautics, Tourism,  
Engineering & Education

## RISE ICREATE 2026

*Advancing Research through Artificial Intelligence Integration  
For Sustainable Futures*



ISSN-L 3116-2215



- Must highlight their latest product innovations (food and non-food products) that might be significant in Harmonized National Research Agenda and Sustainable Development Goals and can be of great help to the institution.
- The project exhibit will be displayed together with the relevant materials e.g. promotional ads submitted by the participating school for exhibition.
- Content
  - Each exhibitor shall also submit IMRAD full paper (see attached template)
  - Each exhibitor must present a poster, banner, catalogue (if available), and other media-related materials highlighting the special features of the robotic technology, product or service. Prepare and print a **2ft x 5ft poster**.
  - They can present different media elements that may include high-quality photos, charts, diagrams, illustrations, etc. that would help bring the content to life.
  - The exhibitors must submit a video (if applicable) showing the capability of the project in solving a problem and serve as aid to their respective department/colleges and the institution; or a sustainable project that would be of great help to aid the community.
- Exhibit Proper
  - All exhibit materials must be submitted for thorough screening.
  - Each exhibitor will be given a booth in the Cabin Hall, WCC ATC Binalonan Campus

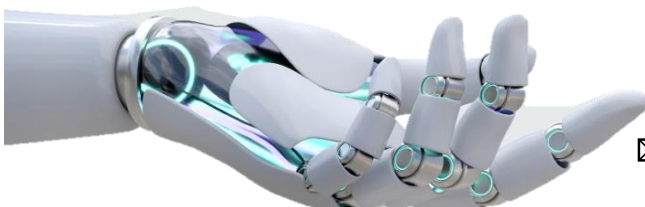
### RESEARCH PRESENTATION

#### **ABSTRACT SUBMISSION GUIDELINES:**

1. Submit a 250 to 300-word abstract consisting of the following sections:

- a. Title of the Paper
- b. Name of Author/s
- c. Affiliation
- d. email address
- e. ORCID Number
- f. logo of the College/University
- g. picture of the Main Author
- h. Content must contain the rationale, objectives, methods, results and recommendations.
- i. Keywords (at least 5 words)

2. Abstract should be submitted electronically in PDF Format



## RISE ICREATE 2026

May 25 to 27, 2026

WCC ATC Cabin Hall, Brgy. Canarvacanan, Binalonan,  
Pangasinan, 2436, Philippines



riseicreateph@gmail.com



+639171434359



RISE: icreate



4TH Research Innovation for Sustainable Education 2026: International  
Conference on Research & Exhibits on Aviation, Aeronautics, Tourism,  
Engineering & Education

## RISE ICREATE 2026

*Advancing Research through Artificial Intelligence Integration  
For Sustainable Futures*



ISSN-L 3116-2215



### FULL PAPER SUBMISSION GUIDELINES:

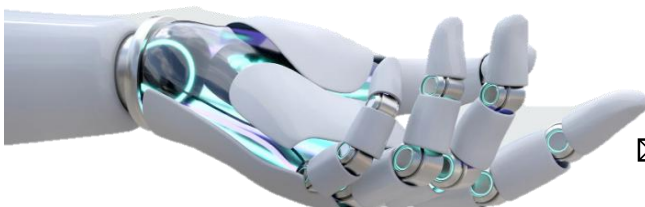
1. The full paper should follow the prescribed format with the following parts:
  - a. Title of the Paper
  - b. Name of the Author/s
  - c. Affiliation
  - d. ORCID Number
  - e. Email Address
  - f. Abstract
  - g. Keywords
  - h. Introduction
  - i. Methodology
  - j. Results and Discussions
  - k. Conclusion and Recommendations
  - l. Bionote of the Authors
2. Full paper should be submitted electronically in MS Word file.

### REVIEW PROCESS

1. All abstracts will undergo a peer-review process. The Review Committee will evaluate submissions and notify authors of acceptance via email one to two weeks after the submission deadline.
2. All submitted papers will be evaluated for the selection of Best Paper.

### RESEARCH PRESENTATION GUIDELINES

- Oral Presentation Guidelines
  - Papers are grouped closely according to the selected discipline.
  - To minimize technical errors, the presenter may submit their PowerPoint presentation on or before **May 20, 2026**.
  - Use English as a medium for presentation.
  - The suggested number of slides is 15-25, however, it will depend on the decision of the presenter as long as it will not exceed on the allotted time. Each presenter is given 5 to 10 minutes presentation.
  - A 15-minute question and answer will follow after the presentation of the group presenters/cluster presenters.



## RISE ICREATE 2026

May 25 to 27, 2026

WCC ATC Cabin Hall, Brgy. Canarvacanan, Binalonan,  
Pangasinan, 2436, Philippines



riseicreateph@gmail.com



+639171434359



RISE: icreate



4TH Research Innovation for Sustainable Education 2026: International Conference on Research & Exhibits on Aviation, Aeronautics, Tourism, Engineering & Education

## RISE ICREATE 2026

*Advancing Research through Artificial Intelligence Integration  
For Sustainable Futures*



ISSN-L 3116-2215



### Evaluation Criteria for Best Paper:

Originality and Innovation	30%
Scientific rigor and validity	20%
Relevance to RISE Theme, AI Integration for Sustainable Futures	20%
Quality of Writing and Organization	20%
Scholarly Contribution and Impact	10%
<b>Total</b>	<b>100%</b>

### Evaluation Criteria for Best Presenter:

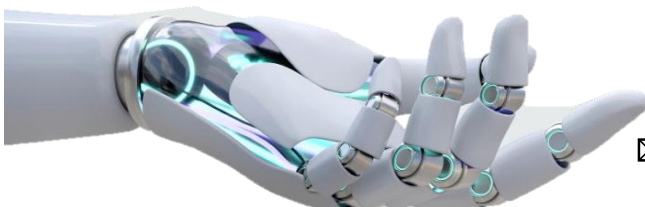
Clarity and effectiveness of communication	30%
Engagement with the audience	25%
Mastery of content	25%
Use of visual aids and presentation tools	10%
Time management	10%
<b>Total</b>	<b>100%</b>

### Evaluation Criteria for Most Promising Young Researcher:

Originality and creativity	25%
Research depth and potential impact	25%
Presentation and communication skills	20%
Relevance to RISE Theme, AI Integration for Sustainable Futures	20%
Commitment to future research	10%
<b>Total</b>	<b>100%</b>

### Evaluation Criteria for AI Driven Project Exhibit:

Innovation and creativity	25%
Visual presentation and organization	25%
Relevance to RISE Theme, AI Integration for Sustainable Futures	20%
Engagement with visitors	20%
Overall effectiveness	10%
<b>Total</b>	<b>100%</b>



## RISE ICREATE 2026

May 25 to 27, 2026  
WCC ATC Cabin Hall, Brgy. Canarvacanan, Binalonan,  
Pangasinan, 2436, Philippines



riseicreateph@gmail.com



+639171434359



RISE: icreate



4TH Research Innovation for Sustainable Education 2026: International  
Conference on Research & Exhibits on Aviation, Aeronautics, Tourism,  
Engineering & Education

## RISE ICREATE 2026

*Advancing Research through Artificial Intelligence Integration  
For Sustainable Futures*



ISSN-L 3116-2215



### CONFERENCE FEES:

- Onsite One paper presentation:
  - Student (₱3,000 Early Bird Payment)  
(₱3,500 Regular Payment)
  - Professional (₱5,000 Early Bird Payment)  
(₱5,500 Regular Payment)

*\*Inclusive of Kit, Book of Abstract & Conference Proceedings, Program, Certificate and Foods & Refreshments*
- Onsite Observer/Collaborators will have to pay:
  - (₱2000 Early Bird Payment)  
(₱2500 Regular Payment)

*\*Inclusive of Kit, Book of Abstract & Conference Proceedings, Program, Certificate and Foods & Refreshments*
- Online Observer/Collaborator:
  - Observer (₱1000 Early Bird Payment)  
(₱1500 Early Bird Payment)
  - Student Presenter ((₱2000 Early Bird Payment)  
(₱2500 Early Bird Payment)
  - Professional Presenter ((₱3500 Early Bird Payment)  
(₱4000 Early Bird Payment)

*\*Inclusive of Kit, ID, Certificate.*
- Publication: IJAMS & SCOPUS INDEXED JOURNALS
  - Web of Science & Scopus-Indexed Publication*

Selected and peer-reviewed papers may be endorsed for possible publication in Scopus-indexed conference proceedings, Scopus-indexed journals, or Web of Science-indexed journals in the fields of Education, Technology, Health Education, Business Management, Engineering, and Aviation.

*\*\$50 to \$250 (for scopus-indexed journal conference proceedings)*
  - IJAMS & Other Online Publication with ISSN: ₱4,000*

*Printed & Online Publication with ISSN & ISBN and National Index: ₱5,500*

*\*Inclusive of Journal.*
  - WCC Binalonan International Research Journal Publication with ISSN:*

*Free for Co-Host Institution*

*Printed & Online Publication with ISSN & ISBN and National Index*

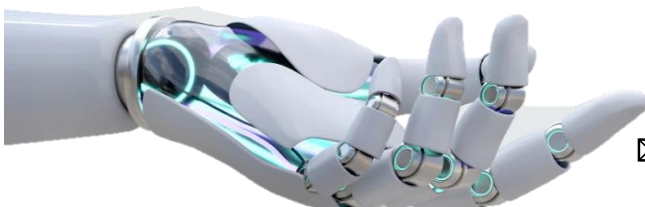
### PAYMENT DETAILS:

#### Bank Details:

BDO Account Name: **WCC Aeronautical and Technological College Inc.**

BDO Account Number: **001498023954**

Landbank : **5692110457**



## RISE ICREATE 2026

May 25 to 27, 2026

WCC ATC Cabin Hall, Brgy. Canarvacanan, Binalonan,  
Pangasinan, 2436, Philippines



riseicreateph@gmail.com



+639171434359



RISE: icreate



4TH Research Innovation for Sustainable Education 2026: International  
Conference on Research & Exhibits on Aviation, Aeronautics, Tourism,  
Engineering & Education

## RISE ICREATE 2026

*Advancing Research through Artificial Intelligence Integration  
For Sustainable Futures*



ISSN-L 3116-2215



### CONTACT DETAILS:

**Prof. Dannah Valerie J. Dulnuan, LPT, CRS**

Research Coordinator

WCC-ATC Binalonan Campus

+639171434359

[dvdulnuan.rpdo.wccatc@gmail.com](mailto:dvdulnuan.rpdo.wccatc@gmail.com)

**Prof. Dr. Rosalie Sheryll T. Rosales, CMITAP, CRS**

Research Director

WCC Aeronautical & Technological College Inc.

[rosales.rpdo.wccatc@gmail.com](mailto:rosales.rpdo.wccatc@gmail.com)

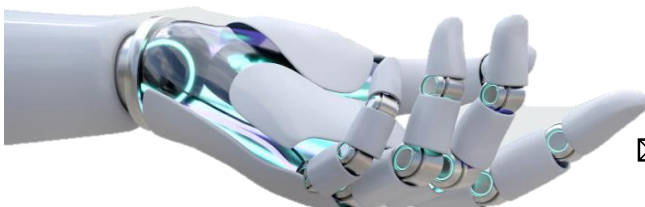
**Dr. Dick O. Eugenio, PhD**

Director, International Affairs and Strategic Partnerships Office

World Citi Colleges

[iaspo@worldciti.edu.ph](mailto:iaspo@worldciti.edu.ph)

+639175336978



## RISE ICREATE 2026

May 25 to 27, 2026

WCC ATC Cabin Hall, Brgy. Canarvacanan, Binalonan,  
Pangasinan, 2436, Philippines



[riseicreateph@gmail.com](mailto:riseicreateph@gmail.com)



+639171434359



RISE: icreate



4TH Research Innovation for Sustainable Education 2026: International  
Conference on Research & Exhibits on Aviation, Aeronautics, Tourism,  
Engineering & Education

## RISE ICREATE 2026

*Advancing Research through Artificial Intelligence Integration  
For Sustainable Futures*



ISSN-L 3116-2215

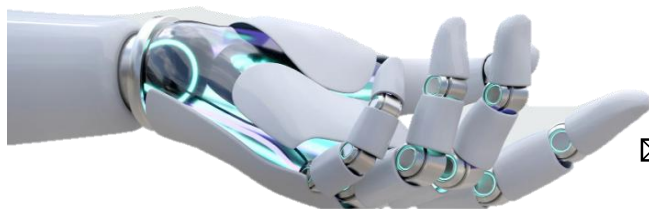


Scopus



### CONFERENCE COMMITTEE:

<b>Executive Chair</b>	Dr. Raymond Patrick V. Guico
<b>Conference Chair</b>	Dr. Roger A. Martinez, Jr., LPT, CGSP
<b>Scientific and Innovation Conference Chair</b>	Dr. Rosalie Sheryll T. Rosales, CMITAP, CRS, CSS
<b>Technical &amp; Operations Chair</b>	Mr. Benedict D. Navalta
<b>Scientific Program Chair</b>	Dr. Genevieve B. Kupang
<b>Strategic Partnerships Chair</b>	Dr. Dick O. Eugenio
<b>Research Conference Advisory Board</b>	Dr. Marilyn Obod, PhD.
	HEI Co-hosts Representative
<b>HEIs Co-Hosts</b>	Baguio Central University
	Lyceum Northwestern University
	Pangasinan Polytechnic College
	Pangasinan State University
	Philippine College of Science and Technology
	Urdaneta City University
	Universidad de Dagupan
	University of Eastern Pangasinan
	University of Luzon
	WCC Aeronautical and Technological College – North Manila
	World Citi Colleges
<b>PARALLEL SESSIONS</b>	
<b>AI Research Forum</b>	Ms. Andrea Liz D. Ebilane
<b>Session Chairs</b>	HEI Co-Hosts Team
<b>Evaluators</b>	HEI Co-Hosts Team
<b>Facilitator/Moderator</b>	HEI Co-Hosts Team
	WCC ATC Binalonan Team
<b>Technical Support Team</b>	ITSD
<b>Evaluation &amp; Monitoring Committee</b>	WCC ATC Binalonan Team
<b>Technical Team</b>	ITSD
<b>Facilitator/Moderator</b>	HEI Co-Hosts Team, Doc. Meriam Diffy Lumactod (Online)
<b>Site Layout &amp; Overall Program Chair</b>	Tourism Management MICE Students
<b>Floor Planning</b>	Safety WCC-ATC Binalonan Campus, Engr. Mark
<b>Pictures &amp; Documentation</b>	The Chronicles WCC-ATC Binalonan Campus The Chronicles WCC-ATC North Manila Campus Marketing Team Mr. Saturo Idelfonso Media Team of HEI Co-Hosts
<b>Guest Tour, Accommodation &amp; Transportation</b>	Mr. Rollen Refuerzo Ms. Lorna De Guzman Capt Julius Bustamante Operations Team
<b>Creatives and Cultural Committee</b>	HEI Co-Hosts Team, Sir Fortin, Sir Jojo
<b>Awards Committee</b>	Office of the Vice President for Academic Affairs
<b>Food Committee</b>	WCC-ATC Binalonan Campus
<b>Logistics</b>	WCC-ATC Binalonan Campus
<b>EMCEE</b>	Ms. Andrea Liz D. Ebilane



## RISE ICREATE 2026

May 25 to 27, 2026

WCC ATC Cabin Hall, Brgy. Canarvacanan, Binalonan,  
Pangasinan, 2436, Philippines



riseicreateph@gmail.com



+639171434359



RISE: icreate



4TH Research Innovation for Sustainable Education 2026: International Conference on Research & Exhibits on Aviation, Aeronautics, Tourism, Engineering & Education

## RISE ICREATE 2026

*Advancing Research through Artificial Intelligence Integration  
For Sustainable Futures*



ISSN-L 3116-2215



Scopus

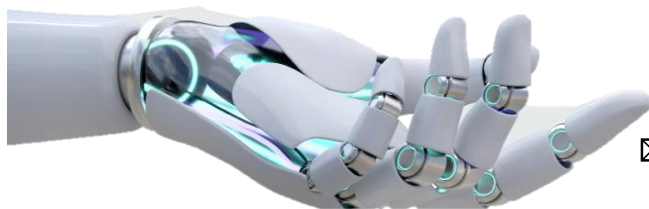


# WCC-ATC RISE 2026: ICREATE-IMPACT

**THEME: ADVANCING RESEARCH THROUGH AI INTEGRATION  
FOR SUSTAINABLE**

**DAY 1: PROJECT EXHIBITS AND AI READINESS FORUM**

MORNING SESSION		
7:40am to 8:00am	REGISTRATION	
	Cutting of Ribbon	CHED Region 1 WCC-ATC President WCC-ATC Executives Co-Organizers & Collaborating Higher Education Institutions Participants & Guests
8:00am to 8:15am	Entrance of Colours Invocation National Anthem Binalonan Hymn Pangasinan Hymn CHED	WCCATC Binalonan ROTC Unit Ptr. Jojo Quibrantos Audio Visual Presentation
8:15am to 8:20am	<b>Introduction of the President</b>	<b>DR. ROGER A. MARTINEZ, Jr., LPT, CGSP</b> Vice President for Academic Affairs WCC-ATC
8:20am to 8:35am	<b>Welcome Address</b>	<b>DR. RAYMOND PATRICK V. GUICO, MM</b> President WCC Aeronautical & Technological College, Inc World Citi Colleges
8:35am to 8:50am	<b>Inspirational Talk</b>	<b>DR. CHERRIE MELANIE ANCHETA-DIEGO, CESO III</b> Director IV, CHED RO1
8:50am to 9:20am	<b>Plenary Talk 1</b>	<b>DR. PANAGIOTIS "PANOS" PANAGIOTAKOPOULO</b> AI Thought Leader and Professor in the School of Global Business Seneca Polytechnic, Canada
9:20am to 9:50am	<b>Plenary Talk 2</b>	<b>DR. A.K. MAHBUBUL HYE</b> Lecturer, Logistics and Supply Chain Management, Faculty of Management Shinawatra University, Thailand
10:30-12:00nn	<b>ADOPT-A-PLANT</b>	Co-Host HEIs Representatives CHED Guest Speakers RISE Delegates



## RISE ICREATE 2026

May 25 to 27, 2026  
WCC ATC Cabin Hall, Brgy. Canarvacanan, Binalonan,  
Pangasinan, 2436, Philippines



riseicreateph@gmail.com



+639171434359



RISE: icreate



4TH Research Innovation for Sustainable Education 2026: International Conference on Research & Exhibits on Aviation, Aeronautics, Tourism, Engineering & Education

## RISE ICREATE 2026

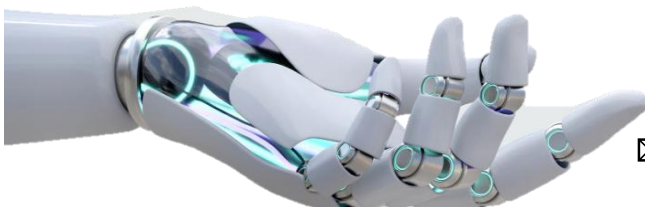
*Advancing Research through Artificial Intelligence Integration  
For Sustainable Futures*



ISSN-L 3116-2215



AI Readiness Forum	10:30-12:00nn	<p><b>DR. CHERRIE MELANIE ANCHETA-DIEGO, CESO III</b> Director IV, CHED RO1</p> <p><b>MS. CHARIS CHRISTELLE J. GO</b> President Berkeley School Baguio City, Philippines</p> <p><b>ENGR. LEONORA F. QUARTE</b> Education Supervisor II Commission on Higher Education Regional Office I HEDC Building, Government Center, Sevilla, San Fernando City, La Union, San Fernando</p>
10am onwards	<p>Presentation of Delegates and Participants in the Project Exhibits</p> <p>Project Presentation and Exhibits &amp; Assessment/Judging</p>	<p><b>Engr. ARC TUBASIS</b> Faculty, Aeronautical Engineering WCC Aeronautical &amp; Technological College Inc.</p> <hr/> <p><b>JUDGES:</b></p> <p><b>DR. DANILO B. BOSE</b> Chief Education Program Specialist, CHED RO1</p> <p><b>ENGR. ANGELICA Q. DOLORES</b> Supervising Education Program Specialist, CHED RO1</p> <p><b>ENGR. ARNOLD C. SANTOS</b> Provincial Director, DOST-Pangasinan</p> <p><b>DR. TZAR UMANG</b> COO, Makerspace Innovhub</p>
11:00am to 4:00pm	Research Presentation per Parallel Session	<ol style="list-style-type: none"> <li>1. Aviation and Aeronautics</li> <li>2. Tourism and Hospitality Management</li> <li>3. Engineering and Technology</li> <li>4. Educational Technology, Social Sciences, Arts, and Humanities</li> <li>5. Business, Finance, and Management</li> <li>6. Criminal Justice Education &amp; Technology</li> <li>7. Health Education &amp; Technology</li> </ol>



## RISE ICREATE 2026

May 25 to 27, 2026

WCC ATC Cabin Hall, Brgy. Canarvacanan, Binalonan, Pangasinan, 2436, Philippines



riseicreateph@gmail.com



+639171434359



RISE: icreate



4TH Research Innovation for Sustainable Education 2026: International  
Conference on Research & Exhibits on Aviation, Aeronautics, Tourism,  
Engineering & Education

## RISE ICREATE 2026

*Advancing Research through Artificial Intelligence Integration  
For Sustainable Futures*

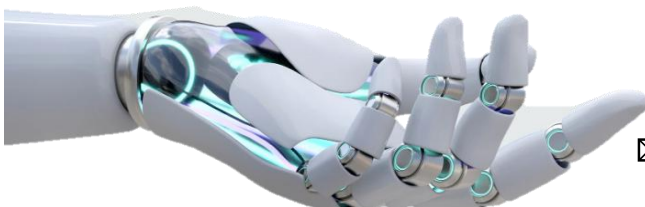


ISSN-L 3116-2215



### DAY 2: AWARDING CEREMONY

MORNING SESSION		
8:00am to 11:30am	Research Presentation per Parallel Session 1. Aviation and Aeronautics 2. Tourism and Hospitality Management 3. Engineering and Technology 4. Educational Technology, Social Sciences, Arts, and Humanities 5. Business, Finance, and Management 6. Criminal Justice Education & Technology 7. Health Education & Technology	
AFTERNOON SESSION		
1:00pm to 1:15pm	➤ Synthesis of Key Discussions and Insights	<b>Dr. GENEVIVE KUPANG</b> International Relations Officer Baguio Central University
1:15pm to 2:00pm	➤ Statement of Support from Representatives of Respective HEIs	Respective HEI Presidents & Representative
2:00pm-2:30pm	➤ RISE 2026 AI Readiness Consortium Commitment Wall Signing Ceremony	Respective HEI Representatives
2:30pm to 3:30pm	Awarding Ceremony Best Paper Award (per parallel session) Best Presenter Award (per parallel session) Best Research Project Award 1. Category 1: Educational Material/VR/AR 2. Category 2: Engineering Technology Innovation 3. Category 3: Product Innovation Most Promising Young Researcher on SDGs Project Exhibit on Sustainability Award	
3:30pm to 3:45pm	Closing Remarks	<b>Dr. ROSALIE SHERYLL T. ROSALES</b> Scientific and Innovation Conference Chair WCC-ATC  SDE Presentation
4:45pm	Conference Photo Opportunity	



## RISE ICREATE 2026

May 25 to 27, 2026

WCC ATC Cabin Hall, Brgy. Canarvacanan, Binalonan,  
Pangasinan, 2436, Philippines



riseicreateph@gmail.com



+639171434359



RISE: icreate



4TH Research Innovation for Sustainable Education 2026: International Conference on Research & Exhibits on Aviation, Aeronautics, Tourism, Engineering & Education

## RISE ICREATE 2026

*Advancing Research through Artificial Intelligence Integration  
For Sustainable Futures*

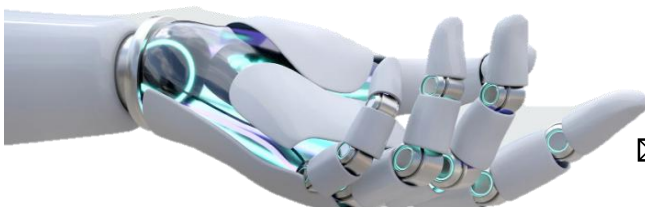


ISSN-L 3116-2215



RESEARCH PRESENTATION PER PARALLEL SESSION	
DAY 1	
MAB 1	<b>Parallel Session 1. AVIATION &amp; AERONAUTICS 1</b>
MAB 2	<b>Parallel Session 2. AVIATION &amp; AERONAUTIC 2</b>
MAB 3	<b>Parallel Session 4. ENGINEERING &amp; TECHNOLOGY 1</b>
MAB 4	<b>Parallel Session 5. ENGINEERING &amp; TECHNOLOGY 2</b>
MAB 5	<b>Parallel Session 7. EDUCATIONAL TECHNOLOGY, SOCIAL SCIENCES, ARTS, AND HUMANITIES 1</b>
MAB 6	<b>Parallel Session 8. EDUCATIONAL TECHNOLOGY, SOCIAL SCIENCES, ARTS, AND HUMANITIES 2</b>

DAY 2	
MAB 7	<b>Parallel Session 3. AVIATION &amp; AERONAUTICS 3</b>
MAB 8	<b>Parallel Session 6. ENGINEERING &amp; TECHNOLOGY 3</b>
MAB 9	<b>Parallel Session 9. CRIMINAL JUSTICE EDUCATION TECHNOLOGY</b>



## RISE ICREATE 2026

May 25 to 27, 2026  
WCC ATC Cabin Hall, Brgy. Canarvacanan, Binalonan,  
Pangasinan, 2436, Philippines



riseicreateph@gmail.com



+639171434359



RISE: icreate



4TH Research Innovation for Sustainable Education 2026: International  
Conference on Research & Exhibits on Aviation, Aeronautics, Tourism,  
Engineering & Education

## RISE ICREATE 2026

*Advancing Research through Artificial Intelligence Integration  
For Sustainable Futures*

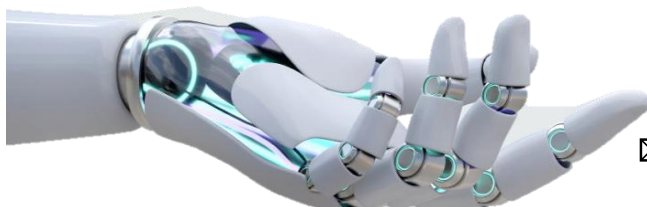


ISSN-L 3116-2215



MAB 10	<b>Parallel Session 10. HOSPITALITY AND TOURISM MANAGEMENT</b>
11	<b>Parallel Session 7. EDUCATIONAL TECHNOLOGY, SOCIAL SCIENCES, ARTS, AND HUMANITIES 3</b>
12	<b>Parallel Session 12. BUSINESS, FINANCE, MANAGEMENT</b>
13	<b>Parallel Session 11. HEALTH TECHNOLOGY</b>

\* Please refer to the conference guidelines for the allocated time for both the presentation and the question-and-answer session.



## RISE ICREATE 2026

May 25 to 27, 2026

WCC ATC Cabin Hall, Brgy. Canarvacanan, Binalonan,  
Pangasinan, 2436, Philippines



riseicreateph@gmail.com



+639171434359



RISE: icreate



4TH Research Innovation for Sustainable Education 2026: International  
Conference on Research & Exhibits on Aviation, Aeronautics, Tourism,  
Engineering & Education

## RISE ICREATE 2026

*Advancing Research through Artificial Intelligence Integration  
For Sustainable Futures*



ISSN-L 3116-2215



### PARTNERSHIP TIERS:

#### As RENEWED CO HOST

Required MINIMUM Number of Onsite Delegates  
5 Participants (Presenters/Observers)

##### Privileges:

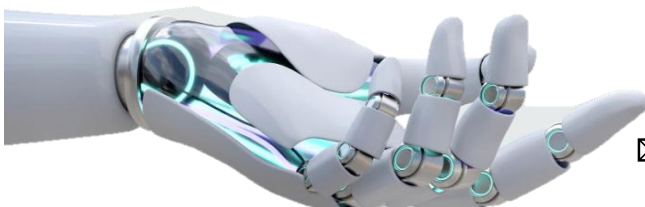
- Inclusion of the institution's logo on all conference promotional materials, including banners, websites, and conference kits.
- Priority access to round-table discussions and exclusive networking events.
- Plaque and Certificates (Special Co-Organizer certificates for the institution)
- Mention in press releases and interviews related to the conference.
- Featured posts on all conference social media platforms acknowledging the co-organizer's contribution.
- Participating in the AI Institutional Readiness Forum
- Serving as peer reviewers to help uphold the academic rigor and quality standards of the conference

#### As NEW CO HOST

Required MINIMUM Number of Onsite Delegates  
10 Participants (Presenters & Observers)

##### Privileges :

- Inclusion of the institution's logo on all conference promotional materials, including banners, websites, and conference kits.
- Priority access to round-table discussions and exclusive networking events.
- Plaque and Certificates (Special Co-Organizer certificates for the institution)
- Mention in press releases and interviews related to the conference.
- Featured posts on all conference social media platforms acknowledging the co-organizer's contribution.
- Participating in the AI Institutional Readiness Forum
- Serving as peer reviewers to help uphold the academic rigor and quality standards of the conference



## RISE ICREATE 2026

May 25 to 27, 2026

WCC ATC Cabin Hall, Brgy. Canarvacanan, Binalonan,  
Pangasinan, 2436, Philippines



riseicreateph@gmail.com



+639171434359



RISE: icreate



4TH Research Innovation for Sustainable Education 2026: International Conference on Research & Exhibits on Aviation, Aeronautics, Tourism, Engineering & Education

## RISE ICREATE 2026

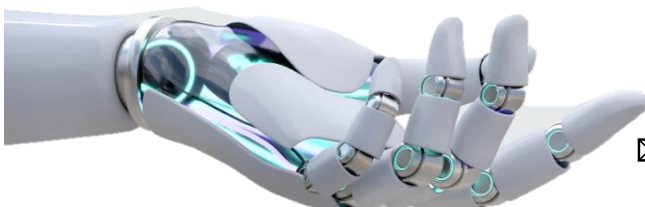
*Advancing Research through Artificial Intelligence Integration  
For Sustainable Futures*



ISSN-L 3116-2215



# SERIES OF 2026



## RISE ICREATE 2026

May 25 to 27, 2026

WCC ATC Cabin Hall, Brgy. Canarvacanan, Binalonan, Pangasinan, 2436, Philippines



riseicreateph@gmail.com



+639171434359



RISE: icreate



**AERONAUTICAL & TECHNOLOGICAL COLLEGE**



GO Group of Companies



**MAKERSPACE**  
INNOVHUB